

## Wilson, Tabatha

---

**From:** Gilliam, Allen  
**Sent:** Tuesday, January 14, 2014 3:35 PM  
**To:** dezell@bmpaint.com  
**Cc:** Fuller, Kim; Wilson, Tabatha; davidrcamdenh2o@cablelynx.com  
**Subject:** AR0022365\_B and M Painting ARP001058 Dec 2013 semi annual Pretreatment report and ADEQ reply\_20140114  
**Attachments:** BMP's Dec 2013 Semi-Annual Report.pdf; BMP's Undated WW Flow Schematic.pdf; Memo Style.pdf - Adobe Acrobat Pro.pdf

Denver,

B & M Painting's December 2013 semi-annual report was received via fax on January 8, 2014, reviewed, deemed complete and compliant with the Federal Pretreatment reporting requirements in 40 CFR 403.12(e) and more specifically with the Metal Finishing standards in 40 CFR 433.17.

Per 40 CFR 403.12(b)(3) please submit within 45 days of the date on this correspondence a "Description of operations. [B and M] shall submit a brief description of the nature, average rate of production, and Standard Industrial Classification of the operation(s) carried out by such Industrial User [this part is adequate]. **This description should include a schematic process diagram which indicates points of Discharge to the POTW from the regulated processes.**"

From the records found, B & M's process descriptions appear somewhat adequate except for the "water treatment facility" for the anodizing wastewater. All that can be found is a schematic (2<sup>nd</sup> attachment) which does not show the flow (with directional arrows) through that system with a description of the pretreatment processes (hex chrome reduction tank(s); IX; holding/pH adjustment tank; polymer addition/chemical precipitation tank with clarifier, filter press; supernatant back to holding tank, final pH adjustment as necessary, etc. [whatever may be present] to the exact sampling point).

Another schematic (dated 1/12/07 with your TOMP – 3<sup>rd</sup> attachment) found in your file does show the process tanks (with no directional flow indicated), but only red "X"s showing floor drains throughout Bldg 4. The process tanks' chems/processes also do not match with the 2<sup>nd</sup> attachment. This 2<sup>nd</sup> attachment, I believe is what I had updated over the phone with a B and M representative a few years ago as I recognize my "scribblings".

If there are further questions, please feel free to contact this office.

Allen Gilliam  
ADEQ State Pretreatment Coordinator  
501.682.0625

ec: David Richardson, City of Camden, Water & Wastewater Utilities General Manager

E/NPDES/NPDES/Pretreatment/Reports

AG



**B&M PAINTING CO., INC.**  
347 Van Buren  
Camden, Arkansas 71701  
(870) 836-3388

JAN 8 2014

12053

**FAX COVER PAGE**

<b>Date:</b>	January 7, 2014	<b>Time:</b>	1515 Hours
<b>To:</b>	ADEQ	<b>Fax:</b>	(501) 682-0910
<b>Attention:</b>	Rufus Terrence — <i>Allen Gilliam</i>		
<b>Ref:</b>	Semi-Annual Industrial Water Users Report		
<b>From:</b>	Denver Ezell	<b>Phone:</b>	(870) 836-3388
<b>Email:</b>	dezell@bmpaint.com	<b>Fax:</b>	(870) 836-3399

13 Pages including cover page. If you fail to receive all pages, please call our office at (870) 836-3388.

**COMMENTS:**

*Dec 2013 semi-annual Prod. report.  
Complete/Compliant.  
No further action necessary  
— AF*

(1) IDENTIFYING INFORMATION

<p>A. LEGAL NAME &amp; MAILING ADDRESS</p> <p>B &amp; M Painting Co., Inc. 347 VAN BUREN ST. CADDEN, AR 71701</p>	<p>B. FACILITY &amp; LOCATION ADDRESS</p> <p>B &amp; M PAINTING Co., Inc. 347 VAN BUREN ST. CADDEN, AR 71701</p>
<p>C. FACILITY CONTACT: <u>DENVER EVELL</u> TELEPHONE NUMBER: <u>(870) 831-3388</u> e-mail: <u>decell@bmapaint.com</u></p>	

(2) REPORTING PERIOD--FISCAL YEAR From Jun 1 to May 31 (Both Semi-Annual Reports must cover Fiscal Year)

<p>A. MONTHS WHICH REPORTS ARE DUE</p> <p><u>JUNE &amp; DECEMBER</u></p>	<p>B. PERIOD COVERED BY THIS REPORT</p> <p>FROM: <u>JULY '13</u> TO: <u>DECEMBER '13</u></p>
--	--

(3) DESCRIPTION OF OPERATION

<p>A. REGULATED PROCESSES</p> <p><u>CORE PROCESS(ES)</u></p> <p>CHECK EACH APPLICABLE BLOCK</p> <p><input type="checkbox"/> Electroplating  <input type="checkbox"/> Electroless Plating  <input checked="" type="checkbox"/> Anodizing  <input checked="" type="checkbox"/> Coating  <input type="checkbox"/> Chemical Etching and Milling  <input type="checkbox"/> Printed Circuit Board Manufacture</p> <p><u>ANCILLARY PROCESS(ES)*</u></p> <p>LIST BELOW EACH PROCESS USED BY THE FACILITY</p> <p><u>Cc ANODIZING</u>  <u>ALUMINIUM CONVERSION COATING</u>  <u>PENETRANT INSPECTION</u>  <u>PLATING</u></p>	<p>B. CHANGES: SUMMARIZE ANY CHANGES IN THE REGULATED PROCESSES SINCE THE LAST REPORT. ATTACH AN ADDITIONAL SHEET IF THE SPACE BELOW IS INADEQUATE. PROVIDE A NEW SCHEMATIC IF APPROPRIATE.</p>
---	---

\*SEE 40CFR63.1101 FOR 49 DIFFERENT APPLICATIONS

<p>C. Number of Regular Employees at this Facility</p> <p><u>40</u></p>	<p>D. [Reserved]</p>
---	----------------------

**(4) FLOW MEASUREMENT**

INDIVIDUAL & TOTAL PROCESS FLOWS DISCHARGED TO POTW IN GALLONS PER DAY

Process	Average	Maximum	Type of Discharge
Regulated (Core & Anc)	3240 gpd.	3500 gpd.	BATCH
<del>Regulated (Cyanide)</del>			<del>(DI RUSE WATER)</del>
'403.6(e) Unregulated'			
'403.6(e) Dilute			
Cooling Water			
Sanitary	800 gpd.	900 gpd.	
Total Flow to POTW	4040 gpd.	4400 gpd.	*****

\*"Unregulated" has a precise legal meaning; see 40CFR403.6(e).

**(5) MEASUREMENT OF POLLUTANTS**

**A. TYPE OF TREATMENT SYSTEM**

CHECK EACH APPLICABLE BLOCK

- Neutralization
- Chemical Precipitation and Sedimentation
- Chromium Reduction
- Cyanide Destruction
- Other WWIX (And Recycled)
- None

**B. COMMENTS ON TREATMENT SYSTEM**

C. THE INDUSTRIAL USER MUST PERFORM SAMPLING AND ANALYSIS OF THE EFFLUENT FROM ALL REGULATED PROCESSES-- CORE & ANCILLARY--(AFTER TREATMENT, IF APPLICABLE). ATTACH THE LAB ANALYSIS WHICH SHOWS A MAXIMUM; TABULATE ALL THE ANALYTICAL DATA COLLECTED DURING THE REPORT PERIOD IN THE SPACE PROVIDED BELOW. ZERO CONCENTRATIONS ARE NOT ACCEPTABLE; LIST THE DETECTION LIMIT IF CONCENTRATION WAS BELOW DETECTION LIMIT.

Pollutant(mg/l)	Cd	Cr	Cu	Pb	Ni	Ag	Zn	CN	TTO'
Max for 1 day	0.11	2.77	3.38	0.69	3.98	0.43	2.61	1.20	2.13
Monthly Ave	0.07	1.71	2.07	0.43	2.38	0.24	1.48	0.65	-
Max Measured	.0041	0.92	0.23	.0018	4.01	<.007	0.34	<.01	
Ave Measured		.685							

Sample Location POTW - OUTFALL #1 & OUTFALL #2

Sample Type (Grab or Composite) Composite

Number of Samples and Frequency Collected 8 total (EVERY 2 HOURS)

40CFR136 Preservation and Analytical Methods Use:  Yes  No

**(6) CERTIFICATION**

A. [Reserved]

[Reserved]

**B. CHECK ONE: G 433.11(c) TOXIC ORGANIC ANALYSIS ATTACHED G 433.12(a) TTO CERTIFICATION**

Based on my inquiry of the person or persons directly responsible for managing compliance with the pretreatment standard for total toxic organics (TTO), I certify that, to the best of my knowledge and belief, no dumping of concentrated toxic organics into the wastewaters has occurred since filing of the last semi-annual compliance report. I further certify that this facility is implementing the toxic organic management plan submitted to Arkansas Department of Environmental Quality.

DENVER L. ERELL  
 (Typed Name)

*[Signature]*  
 (Corporate Officer or authorized representative)

Date of Signature 1-7-14

**CORPORATE ACKNOWLEDGEMENT (Optional)**

STATE OF ARKANSAS )  
 COUNTY OF \_\_\_\_\_ )

Before me, the undersigned authority, on this day personally appeared \_\_\_\_\_ of \_\_\_\_\_ a corporation, known to me to be the person whose name is subscribed to the foregoing instrument(s), and acknowledged to me that he executed the same for purposes and considerations therein expressed, in the capacity therein stated and as the act and deed of said corporation.

Given under my hand and seal of office on this \_\_\_\_\_ day of \_\_\_\_\_, 200\_\_.

Notary Public in and for \_\_\_\_\_  
 County, Arkansas

My commission expires \_\_\_\_\_

**(7) POLLUTION PREVENTION ACT OF 1990 [42 U.S.C. 13101 et seq.]**

*\*2001 (42 U.S.C. 13101) Findings and Policy part (b) Policy.--The Congress hereby declares it to be the national policy of the United States that pollution should be prevented or reduced at the source whenever feasible; pollution that cannot be prevented should be recycled in an environmentally safe manner, wherever feasible; pollution that cannot be prevented or recycled should be treated in an environmentally safe manner wherever feasible; and disposal or other release into the environment should be employed only as a last resort and should be conducted in an environmentally safe manner.*

The User may list any new or ongoing Pollution Prevention practices:

**(8) GENERAL COMMENTS**

**(9) SIGNATORY REQUIREMENTS [40CFR403.12(f)]**

I certify under penalty of law that I have personally examined and am familiar with the information in this document and all attachments were prepared under my direction or supervision in accordance with a system designed to assure that qualified personnel properly gather and evaluate the information submitted. Based on my inquiry of the person or persons who manage the system, or those persons directly responsible for gathering the information, the information submitted is, to the best of my knowledge and belief, true, accurate, and complete. I am aware that there are significant penalties for submitting false information, including the possibility of fine and imprisonment for knowing violations.

DENVER L. ELLI  
NAME OF CORPORATE OFFICER OR AUTHORIZED REPRESENTATIVE

  
SIGNATURE

CHEMICAL MGR.  
OFFICIAL TITLE

1-7-14  
DATE SIGNED



CHAIN OF CUSTODY / ANALYSIS REQUEST FORM

Client: B & M Painting

Project: Paint Removal

Manager: D. L. Cole

Sampled By: D. L. Cole

AIC No. 1 AIC Control No. 6343

AIC Proposal No.  Carrier: URS

Received Temperature 25 Received in Lab 12-18-1

Remarks

Sample Matrix	AIC No.	Date/Time Collected	Identification	Containers Type Preservative	No of BOTTLES		Analyses Requested	No of BOTTLES	Analyses Requested	Date/Time	Date/Time
					W	A					
SOIL											
WATER											
COMPOUND	1	12/12/13	Composite for paint removal		2	1	GRAB	1		12-14-13	14:00
COMPOUND	2	12/12/13	Composite for paint removal		2	1	COMPADE	1		12-18-13	14:00

Field pH calibration on @ Buffer:

T = Sodium Thiosulfate  
Z = Zinc acetate

H = HCl to pH12  
B = NaOH to pH12

V = VOA vials  
N = Nitric acid pH2

Relinquished By: [Signature] Date/Time: 12-14-13 14:00

Relinquished By: [Signature] Date/Time: 12-18-13 14:00

Comments: 1/24 12 x 6 92 W 5 01 5033

Report Address to: 347 Van Hook Carter, AL 71001



January 7, 2014  
Control No. 174083  
Page 1 of 5

B & M Painting Co., Inc.  
ATTN: Mr. Denver Ezell  
347 Van Buren  
Camden, AR 71701

This report contains the analytical results and supporting information for samples submitted on January 3, 2014. Attached please find a copy of the Chain of Custody and/or other documents received. Note that any remaining sample will be discarded two weeks from the original report date unless other arrangements are made.

This report is intended for the sole use of the client listed above. Assessment of the data requires access to the entire document.

This report has been reviewed by the Laboratory Director or a qualified designee.



John Overbey  
Laboratory Director

This document has been distributed to the following:

PDF cc: B & M Painting Co., Inc.  
ATTN: Mr. Denver Ezell  
dezell@bmpaint.com





B & M Painting Co., Inc.  
347 Van Buren  
Camden, AR 71701

### SAMPLE INFORMATION

#### Project Description:

Two (2) water sample(s) received on January 3, 2014  
Rinse Waters  
P.O. No. BM010214-DE-1

#### Receipt Details:

A Chain of Custody was provided. The samples were delivered in one (1) ice chest. Ice chest #1 was delivered with shipping documentation.

Each sample container was checked for proper labeling, including date and time sampled. Sample containers were reviewed for proper type, adequate volume, integrity, temperature, preservation, and holding times. Any exceptions are noted below:

#### Sample Identification:

<u>Laboratory ID</u>	<u>Client Sample ID</u>	<u>Sampled Date/Time</u>	<u>Notes</u>
174083-1	POTW #1 1/2/14 1300	02-Jan-2014 1300	
174083-2	POTW #2 1/2/14 1300	02-Jan-2014 1300	

#### Case Narrative:

There were no qualifiers for this data and all samples met quality control criteria.

#### References:

"Methods for Chemical Analysis of Water and Wastes", EPA/600/4-79-020 (Mar 1983) with updates and supplements EPA/600/5-91-010 (Jun 1991), EPA/600/R-92-129 (Aug 1992) and EPA/600/R-93-100 (Aug 1993).  
"Test Methods for Evaluating Solid Waste Physical/Chemical Methods (SW846)", Third Edition.  
"Standard Methods for the Examination of Water and Wastewaters", 21st edition.  
"American Society for Testing and Materials" (ASTM).  
"Association of Analytical Chemists" (AOAC).


 B & M Painting Co., Inc.  
 347 Van Buren  
 Camden, AR 71701

ANALYTICAL RESULTS

AIC No. 174083-1

Sample Identification: POTW #1 1/2/14 1300

Analyte	Result	RL	Units	Qualifier
<b>Total Cyanide</b> SM 4500-CN C.E 1099	< 0.01	0.01	mg/l	
Prep: 06-Jan-2014 0759 by 308	Analyzed: 06-Jan-2014 1654 by 308		Batch: W46184	
<b>Cadmium</b> EPA 200.8	0.0041	0.004	mg/l	
Prep: 03-Jan-2014 1149 by 271	Analyzed: 03-Jan-2014 1330 by 305		Batch: S36044	
<b>Chromium</b> EPA 200.8	0.92	0.007	mg/l	
Prep: 03-Jan-2014 1149 by 271	Analyzed: 03-Jan-2014 1330 by 305		Batch: S36044	
<b>Copper</b> EPA 200.8	0.23	0.006	mg/l	
Prep: 03-Jan-2014 1149 by 271	Analyzed: 03-Jan-2014 1330 by 305		Batch: S36044	
<b>Lead</b> EPA 200.8	0.0018	0.001	mg/l	
Prep: 03-Jan-2014 1149 by 271	Analyzed: 03-Jan-2014 1330 by 305		Batch: S36044	
<b>Nickel</b> EPA 200.8	< 0.01	0.01	mg/l	
Prep: 03-Jan-2014 1149 by 271	Analyzed: 03-Jan-2014 1330 by 305		Batch: S36044	
<b>Silver</b> EPA 200.8	< 0.007	0.007	mg/l	
Prep: 03-Jan-2014 1149 by 271	Analyzed: 03-Jan-2014 1330 by 305		Batch: S36044	
<b>Zinc</b> EPA 200.8	0.34	0.002	mg/l	
Prep: 03-Jan-2014 1149 by 271	Analyzed: 03-Jan-2014 1330 by 305		Batch: S36044	

AIC No. 174083-2

Sample Identification: POTW #2 1/2/14 1300

Analyte	Result	RL	Units	Qualifier
<b>Total Cyanide</b> SM 4500-CN C.E 1099	< 0.01	0.01	mg/l	
Prep: 06-Jan-2014 0759 by 308	Analyzed: 06-Jan-2014 1702 by 308		Batch: W46184	
<b>Cadmium</b> EPA 200.8	< 0.004	0.004	mg/l	
Prep: 03-Jan-2014 1149 by 271	Analyzed: 03-Jan-2014 1335 by 305		Batch: S36044	
<b>Chromium</b> EPA 200.8	0.45	0.007	mg/l	
Prep: 03-Jan-2014 1149 by 271	Analyzed: 03-Jan-2014 1335 by 305		Batch: S36044	
<b>Copper</b> EPA 200.8	0.23	0.006	mg/l	
Prep: 03-Jan-2014 1149 by 271	Analyzed: 03-Jan-2014 1335 by 305		Batch: S36044	
<b>Lead</b> EPA 200.8	0.0016	0.001	mg/l	
Prep: 03-Jan-2014 1149 by 271	Analyzed: 03-Jan-2014 1335 by 305		Batch: S36044	
<b>Nickel</b> EPA 200.8	< 0.01	0.01	mg/l	
Prep: 03-Jan-2014 1149 by 271	Analyzed: 03-Jan-2014 1335 by 305		Batch: S36044	
<b>Silver</b> EPA 200.8	< 0.007	0.007	mg/l	
Prep: 03-Jan-2014 1149 by 271	Analyzed: 03-Jan-2014 1335 by 305		Batch: S36044	
<b>Zinc</b> EPA 200.8	0.36	0.002	mg/l	
Prep: 03-Jan-2014 1149 by 271	Analyzed: 03-Jan-2014 1335 by 305		Batch: S36044	



B & M Painting Co., Inc.  
347 Van Buren  
Camden, AR 71701

January 7, 2014  
Control No. 174083  
Page 4 of 5

### LABORATORY CONTROL SAMPLE RESULTS

Analyte	Spike Amount	%	Limits	RPD	Limit	Batch	Preparation Date	Analysis Date	Oil	Qual
Total Cyanide	0.1 mg/l	99.5	85.0-115			W48184	08Jan14 0800 by 308	08Jan14 1658 by 308		
Cadmium	0.05 mg/l	101	85.0-115			S36044	03Jan14 0817 by 271	03Jan14 1036 by 305		
Chromium	0.05 mg/l	99.7	85.0-115			S36044	03Jan14 0817 by 271	03Jan14 1036 by 305		
Copper	0.05 mg/l	98.2	85.0-115			S36044	03Jan14 0817 by 271	03Jan14 1036 by 305		
Lead	0.05 mg/l	99.8	85.0-115			S36044	03Jan14 0817 by 271	03Jan14 1036 by 305		
Nickel	0.05 mg/l	102	85.0-115			S36044	03Jan14 0817 by 271	03Jan14 1036 by 305		
Silver	0.02 mg/l	107	85.0-115			S36044	03Jan14 0817 by 271	03Jan14 1036 by 305		
Zinc	0.05 mg/l	104	85.0-115			S36044	03Jan14 0817 by 305	03Jan14 1036 by 305		

### MATRIX SPIKE SAMPLE RESULTS

Analyte	Sample	Spike Amount	%	Limits	Batch	Preparation Date	Analysis Date	Dil	Qual
Total Cyanide	174083-1	0.1 mg/l	99.1	75.0-125	W48184	08Jan14 0800 by 308	08Jan14 1658 by 308		
	174083-1	0.1 mg/l	91.1	75.0-125	W48184	08Jan14 0800 by 308	08Jan14 1658 by 308		
	Relative Percent Difference:		2.04	20.0	W48184				
Cadmium	174066-1	0.05 mg/l	99.7	75.0-125	S36044	03Jan14 0817 by 271	03Jan14 1041 by 305		
	174066-1	0.05 mg/l	98.2	75.0-125	S36044	03Jan14 0817 by 271	03Jan14 1046 by 305		
	Relative Percent Difference:		0.465	20.0	S36044				
Chromium	174066-1	0.05 mg/l	98.0	75.0-125	S36044	03Jan14 0817 by 271	03Jan14 1041 by 305		
	174066-1	0.05 mg/l	97.7	75.0-125	S36044	03Jan14 0817 by 271	03Jan14 1046 by 305		
	Relative Percent Difference:		0.837	20.0	S36044				
Copper	174066-1	0.05 mg/l	95.7	75.0-125	S36044	03Jan14 0817 by 305	03Jan14 1041 by 305		
	174066-1	0.05 mg/l	95.8	75.0-125	S36044	03Jan14 0817 by 305	03Jan14 1046 by 305		
	Relative Percent Difference:		0.125	20.0	S36044				
Lead	174066-1	0.05 mg/l	99.6	75.0-125	S36044	03Jan14 0817 by 271	03Jan14 1041 by 305		
	174066-1	0.05 mg/l	100	75.0-125	S36044	03Jan14 0817 by 271	03Jan14 1046 by 305		
	Relative Percent Difference:		0.362	20.0	S36044				
Nickel	174066-1	0.05 mg/l	92.0	75.0-125	S36044	03Jan14 0817 by 271	03Jan14 1041 by 305		
	174066-1	0.05 mg/l	92.8	75.0-125	S36044	03Jan14 0817 by 271	03Jan14 1046 by 305		
	Relative Percent Difference:		0.575	20.0	S36044				
Silver	174066-1	0.02 mg/l	105	75.0-125	S36044	03Jan14 0817 by 271	03Jan14 1041 by 305		
	174066-1	0.02 mg/l	104	75.0-125	S36044	03Jan14 0817 by 271	03Jan14 1046 by 305		
	Relative Percent Difference:		0.470	20.0	S36044				
Zinc	174066-1	0.05 mg/l	98.6	75.0-125	S36044	03Jan14 0817 by 305	03Jan14 1041 by 305		
	174066-1	0.05 mg/l	98.5	75.0-125	S36044	03Jan14 0817 by 305	03Jan14 1046 by 305		
	Relative Percent Difference:		0.0162	20.0	S36044				



January 7, 2014  
Control No. 174083  
Page 5 of 5

B & M Painting Co., Inc.  
347 Van Buren  
Camden, AR 71701

LABORATORY BLANK RESULTS

Analyte	Result	RL	PQL	QC	Preparation Date	Analysis Date	Qual
				Sample			
Total Cyanide	< 0.01 mg/l	0.01	0.01	W48184-1	08Jan14 0800 by 308	08Jan14 1851 by 308	
Cadmium	< 0.004 mg/l	0.004	0.004	S36044-1	03Jan14 0817 by 271	03Jan14 1030 by 305	
Chromium	< 0.007 mg/l	0.007	0.007	S36044-1	03Jan14 0817 by 271	03Jan14 1030 by 305	
Copper	< 0.008 mg/l	0.008	0.008	S36044-1	03Jan14 0817 by 305	03Jan14 1030 by 305	
Lead	< 0.001 mg/l	0.001	0.001	S36044-1	03Jan14 0817 by 271	03Jan14 1030 by 305	
Nickel	< 0.01 mg/l	0.01	0.01	S36044-1	03Jan14 0817 by 271	03Jan14 1030 by 305	
Silver	< 0.007 mg/l	0.007	0.007	S36044-1	03Jan14 0817 by 271	03Jan14 1030 by 305	
Zinc	< 0.002 mg/l	0.002	0.002	S36044-1	03Jan14 0817 by 305	03Jan14 1030 by 305	



CHAIN OF CUSTODY / ANALYSIS REQUEST FORM

PAGE 1 OF 1

Client: B.M. Paints  
 Project Reference: RANGE MATERS  
 Project Manager: D.L. EREL  
 Sampled By: DL EREL  
 AIC No. 1 Sample Identification POTW #1 Date/Time Collected 1/14/13  
 AIC No. 2 Sample Identification POTW #2 Date/Time Collected 1/14/13

NO OF BOTTLES	SAMPLE MATRIX			ANALYSES REQUESTED	NO OF BOTTLES	ANALYSES REQUESTED	NO OF BOTTLES	ANALYSES REQUESTED	NO OF BOTTLES	ANALYSES REQUESTED	NO OF BOTTLES	ANALYSES REQUESTED	NO OF BOTTLES	ANALYSES REQUESTED
	WATER	SOIL	COMPOST											
2			X		2	1	1							
2			X		2	1	1							

Remarks: 18 MONTHS (9) CYMMS

Field pH calibration: ON Q  
 Buffer: Q

Turnaround Time Requested: (Please circle)  
 NORMAL or EXPEDITED IN 3 DAYS  
 Expedited results requested by: DL EREL  
 Phone: 501-682-8388  
 Report Attention to: B & M PAINTING  
 Report Address to: 347 VAN BUREN  
CAMDEN, AR 71701

Container Type: P = Plastic, G = Glass  
 Preservative: S = Sulfuric acid pH2, P = Phosic  
 V = VOA vials, N = Nitric acid pH2  
 H = HCl to pH2, B = NaOH to pH12  
 Y = Sodium Thio sulfate, Z = Zinc acetate

Retinquired By: DL EREL Date/Time: 1-14-13  
 Retinquired By: DL EREL Date/Time: 1-14-13  
 Received By: DL EREL Date/Time: 1-14-13  
 Received in Lab By: DL EREL Date/Time: 1-14-13

Comments: 12 X 697 WJ0351398457

FORM 0060



**B & M Painting**  
Military and Aerospace Painting

# PURCHASE ORDER

347 Van Buren  
Camden Ar. 71701  
(870) 836-3308  
[e-mail]

P.O. NO. BMD10214-0E-1  
DATE January 2, 2014  
CUSTOMER ID

**VENDOR**

American Interplay  
Little Rock, AR

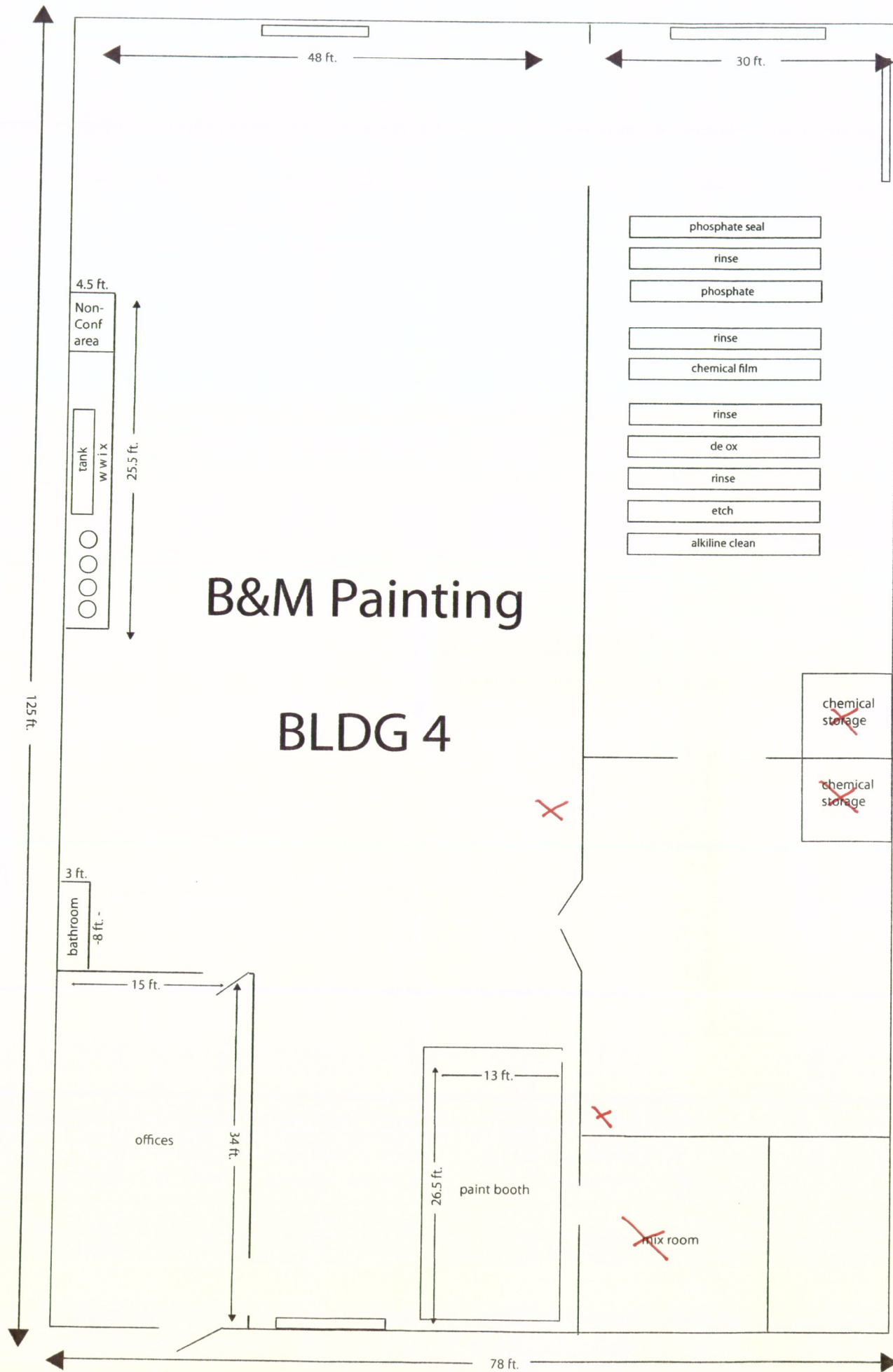
SHIPPING METHOD	SHIPPING TERMS	DELIVERY DATE
	UPS	852P

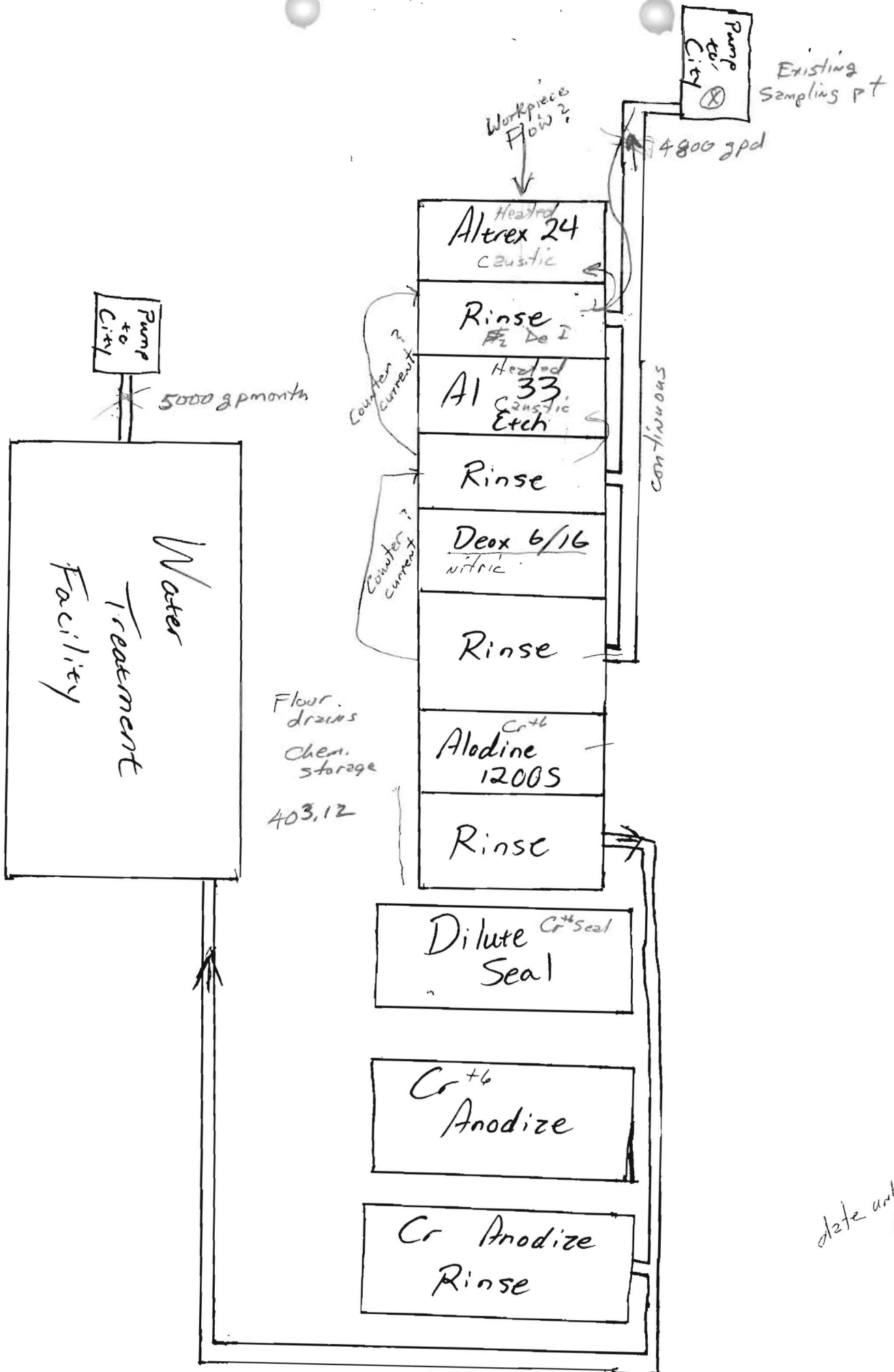
QTY	ITEM #	DESCRIPTION	JOB	UNIT PRICE	LINE TOTAL
2.00	1	Metal Analyses (7 each)			
2.00	2	Cyanide Analysis			
		For Semi-annual Industrial Water Users' Report....general industry			

SUBTOTAL	
SALES TAX	
TOTAL	

- Please send two copies of your invoice.
- Enter this order in accordance with the prices, terms, delivery method, and specifications listed above.
- Please notify us immediately if you are unable to ship as specified.
- Send all correspondence to:  
B & M Painting  
347 Van Buren  
Camden Ar. 71701  
870-836-3308  
870-836-3399

*D. J. ...* 1-2-14  
 authorized by \_\_\_\_\_ Date  
*W. E. ...* 1-2-14  
 authorized by \_\_\_\_\_ Date





date unknown  
AT